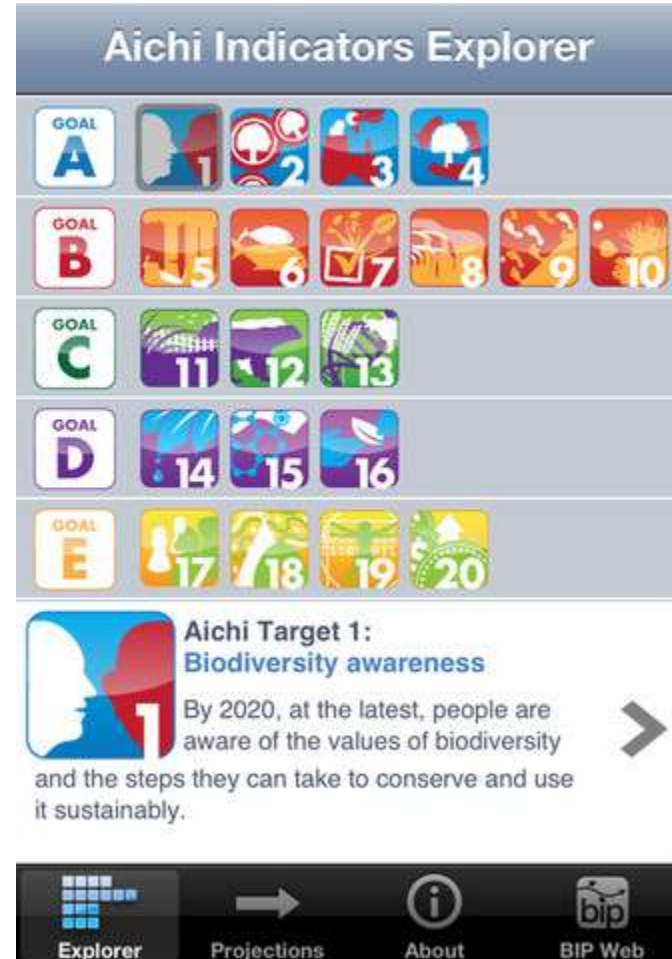
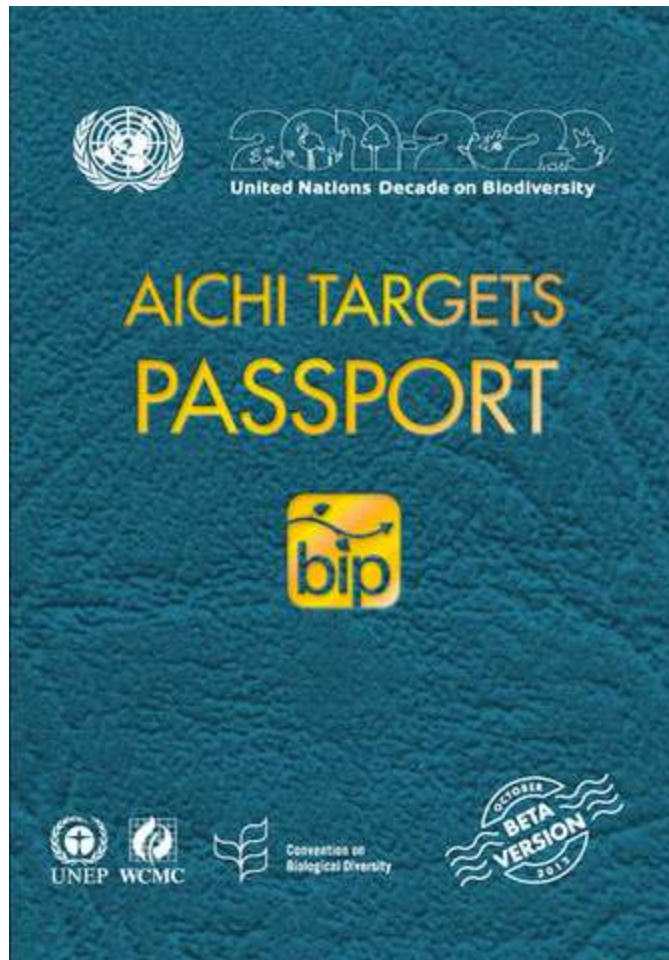


# **Biodiversity Outlook, contribution from observation and its relation to Aichi Biodiversity Targets**

- Contribution in relation to Aichi Targets
- Contribution to GBO4
- Contribution in terms of indicators

# BIP developed new application easy to look the status of biodiversity in terms of Aichi Target



# At least one indicator for each Target

## No indicators have developed for some target

### Aichi Targets: Indicator Updates Overview

|                                                                                                                                                                                                        |                                                                                                                                                                                                             |
|--------------------------------------------------------------------------------------------------------------------------------------------------------------------------------------------------------|-------------------------------------------------------------------------------------------------------------------------------------------------------------------------------------------------------------|
|  <b>Awareness of biodiversity values</b> 2<br>Indicator: Biodiversity Barometer                                        |  <b>Protected areas</b> 25<br>Indicators: Coverage of protected areas and overlays with biodiversity                       |
|  <b>Integration of biodiversity values</b> 5<br>No indicator yet available                                             |  <b>Preventing extinctions</b> 29<br>Indicators: Living Planet Index and IUCN Red List Index                               |
|  <b>Incentives</b> 6<br>No indicator yet available                                                                     |  <b>Agricultural biodiversity</b> 33<br>Indicators: Genetic diversity of domesticated animals and ex situ crop collections |
|  <b>Use of natural resources</b> 7<br>Indicator: Ecological footprint                                                  |  <b>Essential ecosystem services</b> 36<br>Indicator: Accessibility to biodiversity for food and medicine                  |
|  <b>Loss of habitats</b> 9<br>Indicator: Extent of forests and forest types                                            |  <b>Ecosystem resilience</b> 39<br>No indicator yet available                                                              |
|  <b>Sustainable fisheries</b> 12<br>Indicator: Number of MSC certified fisheries                                       |  <b>Nagoya Protocol on ABS</b> 40<br>Indicator: Ratification status of the Nagoya Protocol                                 |
|  <b>Areas under sustainable management</b> 14<br>Indicator: Area of forest under sustainable management: certification |  <b>NBSAPs</b> 43<br>Indicator: Status of NBSAPs                                                                          |
|  <b>Pollution</b> 16<br>Indicator: Loss of reactive nitrogen to the environment                                      |  <b>Traditional knowledge</b> 45<br>Indicator: Index of Linguistic Diversity                                             |
|  <b>Invasive Alien Species</b> 19<br>Indicator: Trends in Invasive Alien Species: Pressure                           |  <b>Biodiversity knowledge</b> 48<br>Indicator: Number of maintained species inventories being used to implement the CBD |
|  <b>Vulnerable ecosystems</b> 22<br>Indicator: Ocean Health Index                                                    |  <b>Resource mobilization</b> 50<br>Indicator: Official Development Assistance in support of the CBD                     |

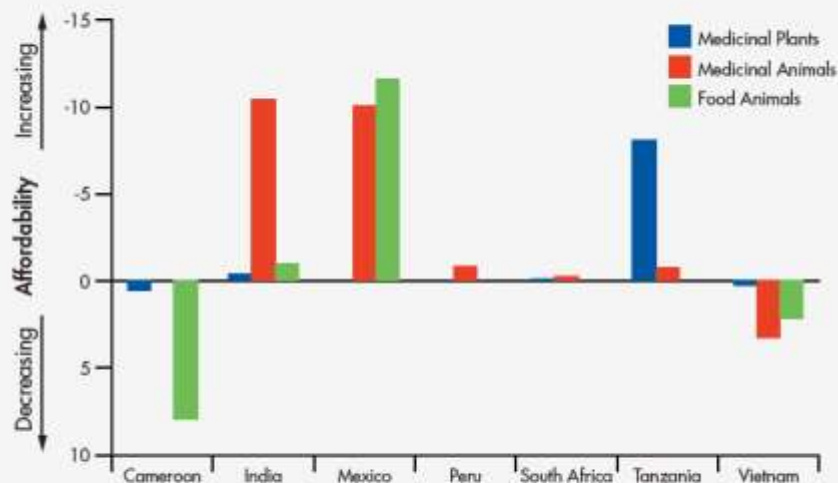


### Aichi Target 14: Essential Ecosystem Services

Indicator: Accessibility to biodiversity for food and medicine



Where people rely on buying foods and medicine made from wild animal and plant species, access for poorer members of society to these products is a function of their price and affordability. In five of the seven countries sampled, wild products are becoming increasingly affordable to the poorest 10% of the population.



Change in the percentage of GDP per capita for 10% poorest used to purchase baskets of goods (MP =medicinal plants, MA=medicinal animals and FA= food animals), 2000-2010, indicating affordability

Source: TRAFFIC and IUCN SSC, 2010

# We can suggest new indicators of each target

Goals and Targets | Framework | Proposed Headlines

Select a target to view the matching indicators.

| GOALS                                                                                                                      | TARGETS                                                                             |                               |                          |                             |                             |                       |
|----------------------------------------------------------------------------------------------------------------------------|-------------------------------------------------------------------------------------|-------------------------------|--------------------------|-----------------------------|-----------------------------|-----------------------|
| <b>A</b><br>Address the underlying causes of biodiversity loss by mainstreaming biodiversity across government and society | 1<br>Awareness of BD values                                                         | 2<br>Integration of BD values | 3<br>Incentives          | 4<br>Use of nat. resources  |                             |                       |
|                                                                                                                            | <b>B</b><br>Reduce the direct pressures on biodiversity and promote sustainable use | 5<br>Loss of habitats         | 6<br>Sust. fisheries     | 7<br>Areas under sust. mgt. | 8<br>Pollution              | 9<br>IAS              |
|                                                                                                                            |                                                                                     |                               |                          |                             |                             | 10<br>Vulnerable eco. |
|                                                                                                                            |                                                                                     |                               |                          |                             |                             |                       |
| <b>C</b><br>To improve the status of biodiversity by safeguarding ecosystems, species and genetic diversity                | 11<br>Protected areas                                                               | 12<br>Preventing extinctions  | 13<br>Agricultural BD    |                             |                             |                       |
|                                                                                                                            | <b>D</b><br>Enhance the benefits to all from biodiversity and ecosystem services    | 14<br>Essential eco. services | 15<br>BD & carbon stocks | 16<br>ABS implementation    |                             |                       |
| <b>E</b><br>Enhance implementation through participatory planning, knowledge management and capacity building              |                                                                                     | 17<br>NBSAPs                  | 18<br>Trad. knowledge    | 19<br>BD knowledge          | 20<br>Resource mobilization |                       |

Filter by partner  Pre-2010 Reviewed

Select an indicator to view full details. Clear

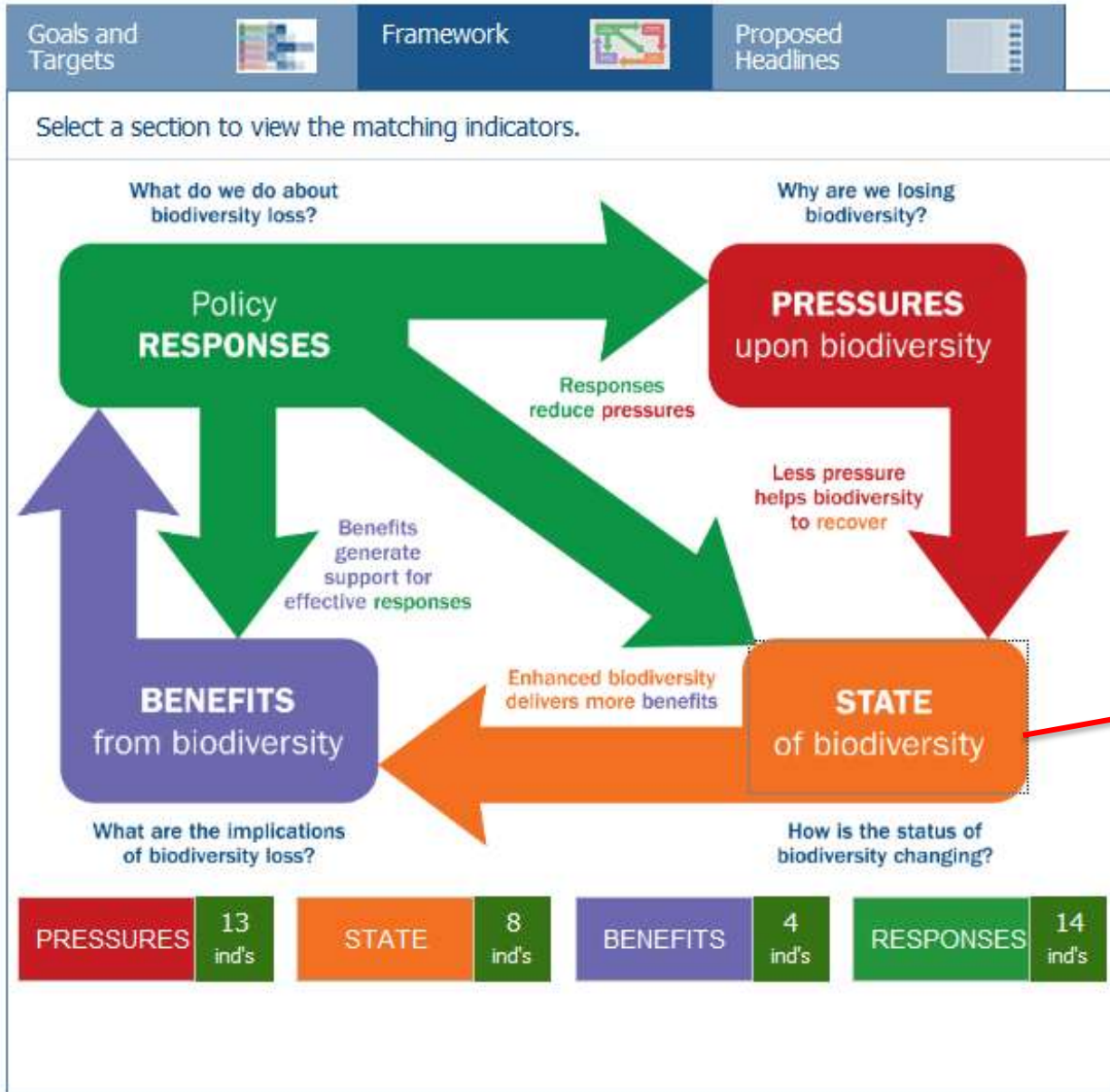
- Red List Index
- Biodiversity for food & medicine
- Health & wellbeing of communities directly dependant on ecosystem goods & services
- Nutrition indicators for biodiversity

**+ Suggest a new indicator**

0 1 2 3 >3 Number of indicators 4 of 29



# New indicators relating to DPSI model



Search bar

Filter by partner [dropdown] Pre-2010 Reviewed

Select an indicator to view full details. Clear

- Red List Index
- Extent of forests & forest types
- Extent of marine habitats
- Area of forest under sustainable management: degradation & deforestation
- Forest fragmentation
- River fragmentation & flow regulation
- Ex-situ crop collections
- Genetic diversity of terrestrial domesticated animals

+ Suggest a new indicator

0 1 2 3 >3 Number of indicators 8 of 29

# Scope of GBO-4

## **GBO-4 will consider 4 questions:**

1. What actions need to be taken to achieve the Aichi Targets?
2. Are we on track to reach the Aichi Targets by 2020?
3. How do the Aichi Targets and progress towards them position us to realize the 2050 Vision of the Strategic Plan?
4. How does implementation of the Strategic Plan and progress towards the Aichi Targets contribute to the MDGs

# Scope of GBO-4

## Information sources:

- Fifth national reports and other information provided by Parties
- Indicator information
- Scenario assessments
- Scientific literature

# Scope of GBO-4

Assuming that COP12 will be in 2014 the following deadlines are envisaged:

| Product                                | Date           |
|----------------------------------------|----------------|
| GBO-4 Advisory Group constituted       | September 2012 |
| Draft outline                          | December 2012  |
| First peer-review of selected sections | October 2013   |
| Revision of selected sections          | January 2014   |
| Second peer review of all sections     | May 2014       |
| Revision of drafts                     | June 2014      |
| Typesetting in English                 | July 2014      |
| Translation into official UN languages | July 2014      |
| Printing and dispatch to launch events | September 2014 |
| Launch of the main GBO-4 report        | October 2014   |

*The 5<sup>th</sup> NR*





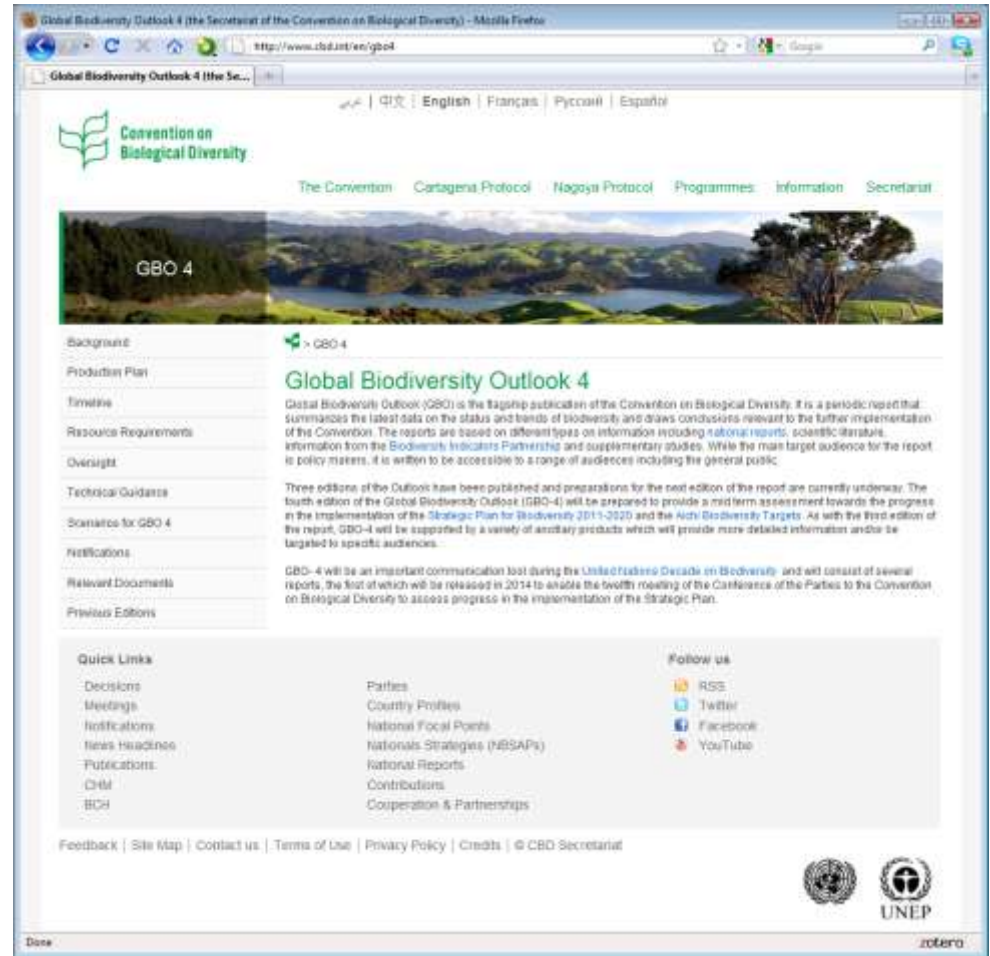
# Progress to Date

## GBO-4 website developed

- Available in English, French and Spanish
- Updated periodically

## Partners notified of production schedule

- Diversitas, FAO, GBIF, **GEO-BON**, IPBES, WCMC



## **Summary:**

# **What we can do to contribute through the observation and its relation to Aichi Biodiversity Targets**

- Provide observation facts on status of biodiversity in AP region
- Propose new indicators
- Indicate appropriate case studies
- Timely information for GBO4